



Buffing Sander 7125

User instruction



[Characteristic]

- This is a sander for final polishing and finishing after removal of unevenness of coating, dirt, etc.
- This is small and light and it has good workability.

[Specification]

RPM	Orbit mm	dia	Air consumption l/min.	Gas pressure MPa	Mass Kg	Pad size mm
8,500	12		380	0.4 to 0.6	0.95	φ72

-Note-

Before using this product, read these instructions carefully and understand the contents well. Please keep the instruction so that you can refer to them at any time.

[Objective of Use]

This sander is for polishing and finishing after removal of unevenness of coating, dirt, etc.

[Cautions regarding safety]

WARNING Never operate the tool without a load. If this is done, the pad is destroyed and scattered causing injury. It is very dangerous.

Never touch the rotating part since you may get hurt.

·For this sander, please use only the recommended buffing material. If other products are used, vibration becomes big and the surface may be damaged by excess vibration. The life of this sander may be reduced.

·The air pressure should be 0.6 MPa or less. If it is used at pressures higher than the recommended pressure, The RPM's are too high, and the pad may be damaged causing injury.

·Since unexpected injury may occur when the product is used for purposes that are not listed, do not use this product for purposes other than those listed in user instruction.

·Work appropriate clothes. Wear protection glasses. Wear a dust mask to protect against dust. If noise is a concern, use ear plugs. If necessary, wear gloves.

·In order to prevent problems caused by vibration, limit continuous use to 30 minutes. Take appropriate breaks. If problems arise, work should be stopped immediately and a doctor should be consulted.

·The work place should be kept neat. Use this product in a safe environment. Children or people other than the operator should not be in the immediate area.

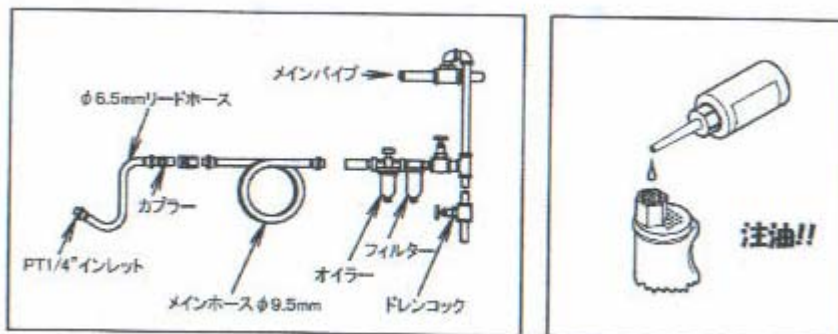
·Do not work in an uncomfortable position. Always make sure that your footing is secure, and maintain a stable body position.

·If abnormal sound or abnormal vibration, etc. occur, stop the work immediately. Loosening of internal screws or broken parts are suspected. Continuous use may cause injury.

[Cautions on use]

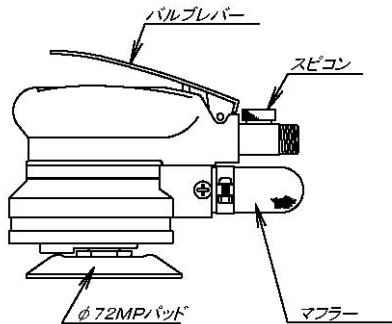
- Please refer the following piping reference figure for piping.
- Before operation, check for loose parts.
- Clean the air connection to remove small stones or sand.
- When inspecting the tool or changing the pad or paper, disconnect the air hose.
- Connect the air hose after the regulator is closed.
- When starting work, operate the valve lever as the abrasive surface contacts the surface to be polished. If work is stopped in the middle, be sure to close the regulator.
- Do not throw the tool, drag the air hose, etc.
- The tool may be damaged by work which exceeds its design limits.
- If inspection and repair is requested, contact the retail store where the product was purchased or a repair center. Use only proper replacement parts.
- The air motor is continuously exposed to oxidation and wearing caused by high speed rotation. Because of this, please oil after each use.

Referring to the figure below, several drops of special air tool oil (CU-60A) should be poured into the air supply opening. Operate the tool at low speed to circulate the oil throughout the entire motor for storing.



[Method of use]

Name of each part



At work

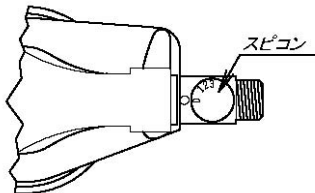
- Check to see that the workplace is in order and is appropriate for the work.
- Inspect for loose parts.
- Confirm the proper air pressure (0.4 to 0.6 MPa).
- Tighten all couplings securely so that they will not be loosened by vibration.
- Attach buffing material or paper by pressing it uniformly with the palm of hand to attach it securely.

Starting and stopping

- The tool starts when the valve lever is pressed lightly. It stops when the lever is released.
- Operate the lever as the abrasive contacts the surface to be polished. When the tool is transported, be sure to remove the air hose.

During use

- The tool can be adjusted continuously from low to high speed by the speed control. Adjust it according to the work.
- Do not press it onto the surface to be polished with excess force. This does not increase efficiency, but it shortens tool life.



After use

·Apply spindle oil to the air supply opening and operate the tool at low speed. After use, be sure to remove the air hose.

Maintenance and inspection

Maintenance and inspection should be done AFTER removing the air hose.

·Check for loose screws

Check for loose screws or parts.

·Oil supply

After use, fill the air supply opening with spindle oil. Operate the tool at low speed.

·Cleaning

Clean the air connection to prevent sand, etc., from entering the motor.

·Storing

Store in a safe, dry place that is inaccessible to children.

Exchange and repair

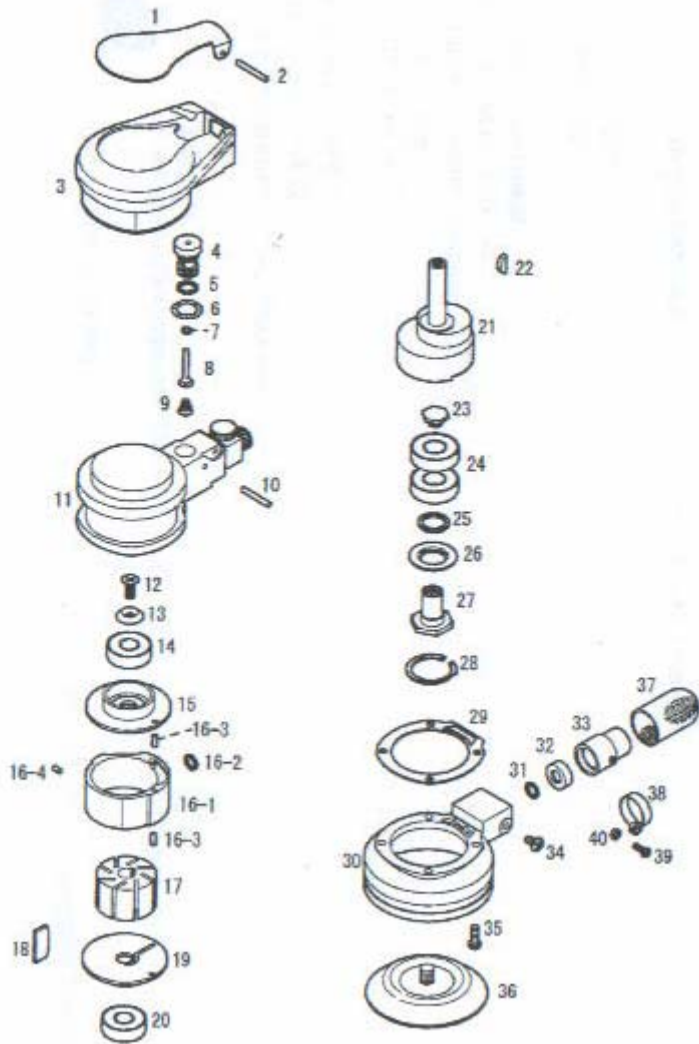
·Changing the pad (after removing the air hose.)

When there pad is worn or damaged, it should be changed. When abnormal projections or dents are present on the pad surface, it is not suitable for continuous use and should be changed.

·**Guidelines for repair**

Check the tool before, after, and during use. If abnormal sounds or vibration are present, make the necessary repairs. In any case, we recommend a yearly inspection.

[Exploded view]



[Attachments]

Both opening spanner (22-17)	1
Coupler	1
Oil for air tool	1

[Table for parts]

Parts no.	Figure no.	Part name	Quantity	Note
1	21809	Valve lever	1	
2	410324	Spring pin ($\phi 3$ x 24)	1	
3	223032	Body cover	1	
4	22310	Valve pin sleeve	1	
5	KS07	O ring (KS-7)	2	
6	3712	Wave washer (WW-12)	1	
7	KS02	O ring (KS-2)	1	
8	22338	Valve	1	
9	28827B	Valve spring	1	
10	420322	Needle roller ($\phi 3$ x 21.8)	1	
11	22301	Body	1	
12	130512	Dish small screw (M5 x 12)	1	
13	3805	Rosette washer (M5)	1	
14	6000ZZ	Ball baring (6000ZZ)	1	
15	207083	U bare case	1	
16		Cylinder set	1 set	
16-1	216031	Cylinder	1	
16-2	KS05	O ring (KS-5)	1	
16-3	410308	Spring pin ($\phi 3$ x 8)	2	
16-4	410304	Spring pin ($\phi 3$ x 4)	1	
17	22621	Rotor	1	
18	22622	Vane	8	
19	22342	L bare case	1	
20	6300ZZ	Ball baring (6300ZZ)	1	
21	22340	Shaft with head	1	
22	510313	Half moon key (3 x 13)	1	
23	202072	Retainer bolt	1	
24	6001DD	Ball baring (6001DD)	2	
25	22309	$\phi 18$ felt ring	1	
26	22308	Dust seal	1	

27	22341	Pad retainer	1	
28	OV 28	Snap ring (round R-28)	1	
29	22311	Body gasket	1	
30	22327	Base ring	1	
31	KS05	O ring (KS-5)	1	
32	216182	Silencer B	1	
33	216181	Silencer A	1	
34	150408	Trasbis (M4 x 8)	1	
35	100412	Button screw with hexagonal hole (M4 x 12)	4	
36	22055	φ72 MP pad	1	
37	22344	Muffler	1	
38	290152	Duct band	1	
39	110310	Bis (M3 x 10)	1	
40	2103	Hexagonal nut (M3)	1	

*Specification may change without notice.

[Product warranty]

(1) Product warranty

If the product malfunctions within the warranty period (within 3 months after delivery) under normal use following the instructions and cautions on the label, it will be repaired or defective parts will be replaced by our company.

However, malfunctions falling into the following categories are not covered by the warranty.

- Malfunction or damage because mistakes on the part of the user, neglecting maintenance, or improper storage.
- Malfunction or damage because of changes to the orbiting mechanism.
- Normal wear of consumable parts (pad, rubber, etc.).
- Malfunction or damage due to factors beyond our control such as natural disasters like earthquakes, wind, water, or fire.
- Malfunction due to the use of improper parts.
- Malfunction or damage due to the attachment method.

(2) Warranty request method

When service of this product is required under the above regulations, please contact the retail store where it was purchased. The necessary process will be administered by the retail company.

Please be aware that we are the final judges concerning warranty repairs.

-Caution-

Please keep the receipt issued by the retail store and show it when warranty repairs are requested.

(3) Repair after warranty period

Consult the retail store where it was purchased. If the product can be repaired, it can be repaired at the customer's expense.

Original seller: Sumitomo 3M K.K.
Polishing material product department
2-33-1, Tamagawadai, Setagaya-ku, Tokyo, 158-0096
phone: 03 (3709) 8221

Original manufacturer: Compact Tool K.K.
2-14-13, Hatanaka, Niza-shi, Saitama, 352-0012
phone: 048 (478) 1500